

SURE STATUS[®]

COVID-19 Antigen CARD TEST

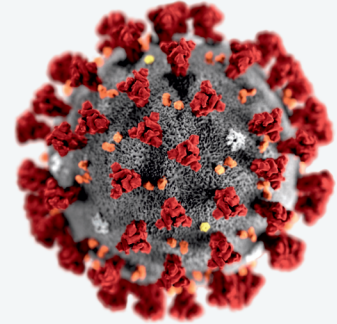
(Nasopharyngeal Swab)

SARS-CoV-2 Antigen test

- » Based on Colloidal Gold immunochromatography
(Visually read lateral flow immunoassay, Stable at 4-30°C)
- » User friendly, Fast and simple, No instrument needed
- » Rapid Test Time (15-20 Min)
- » Simple detection of SARS-CoV-2 Antigen

WHO EUL

It detects all VoC,
including Delta and
Omicron

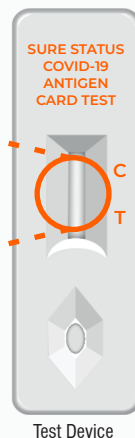


Colloidal Gold Immunochromatography

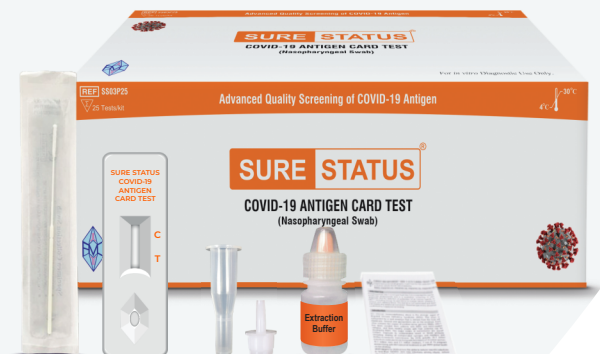
95% Sensitivity*
100% Specificity*

Advanced Quality
Performance

Results In 15-20 Minutes



Test Device



Above kit components are for reference purpose only



**Premier Medical Corporation
Private Limited**

*In-house Evaluation

Catalogue No.	Pack Size	Manufacturing Site
SS03P25 (WHO EUL)	25T	INDIA

Clinical Performance Evaluation by FIND GERMANY

Clinical Sensitivity (95% CI), N	91% (83.8, 95.2), 100
Clinical Specificity (95% CI), N	97% (94.9, 98.2), 429

Order at info@premiermedcorp.com

COVID-19 Antigen CARD TEST

Intended Use	Detection of SARS-CoV-2 Antigen
Package	25 Tests / kit
Storage	4-30°C
Specimen Type	Nasopharyngeal Swab
Shelf life	24 months
Time to result	15-20 minutes

SURE STATUS[®]

COVID-19 Antigen CARD TEST (Nasopharyngeal Swab)

COVID-19 Rapid Diagnostic Test

PROCEDURE

STEP 1

Take extraction buffer bottle provided, twist open the cap and add 12 drops (Approx 300 μ l) or fill the vial upto the embossed marking of extraction buffer into reaction buffer vial.

Marking at approx 300 μ l →



STEP 2

Tilt patient's head back 70 degrees. Insert a (Minitip) sterile swab into the nostril of the patient, swab over the surface of the posterior nasopharynx. (Swab should reach depth equal to distance from nostrils to outer opening of the ear).

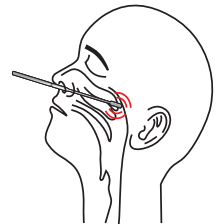
Nasopharyngeal Swab Collection.



STEP 3

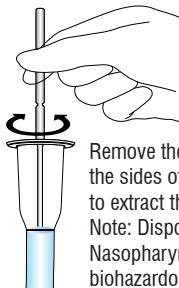
Slowly rotate swab (right and left) in nostril to absorb secretions. Slowly remove swab after rotating it.

Nasopharyngeal Swab Collection.



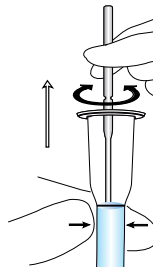
STEP 4

Insert the swab into reaction buffer vial. Swirl the swab 5-10 times.



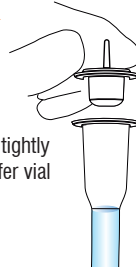
STEP 5

Remove the swab while squeezing the sides of the reaction buffer vial to extract the liquid from the swab. Note: Dispose of the used Nasopharyngeal Swab as biohazardous waste.



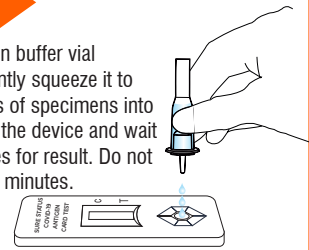
STEP 6

Close the nozzle cap tightly onto the reaction buffer vial by pressing



STEP 7

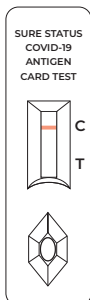
Invert the reaction buffer vial vertically and gently squeeze it to dispense 3 drops of specimens into a sample well of the device and wait for 15-20 minutes for result. Do not interpret after 20 minutes.



Note: If test window (Background) is not clear at 15 minutes then read the result at 20 minutes.

INTERPRETATION

STEP 5 : Read Results



NEGATIVE

If only a single line appears, at control line "C" as in the figure, the test indicates the absence of SARS-CoV-2 Antigen.

The result is Negative or non-reactive.



POSITIVE

In addition to the presence of the C line, if the T line develops, the test indicates the presence of SARS-CoV-2 Antigen.

The result is positive or reactive. Note: Interpret faint line as reactive line.

Alternative diagnosis method should be performed in order to obtain the confirmation of SARS-CoV-2 infections.



INVALID



No presence of control line 'C' in the results window (irrespective of presence of test lines) indicates an invalid result. The directions may not be followed correctly or the test may have deteriorated.

The Invalid test results should be retested with new test device.

We acknowledge the contribution of NCR Biotech Science Cluster BIOREPOSITORY and DBT India Consortium (THSTI) in development of our product.



Premier Medical Corporation Private Limited

A1 - 302, GIDC, Sarigam 396155. Dist. Valsad, Gujarat, INDIA

Customer support email : info@premiermedcorp.com

Tel.: +91 260 2780112/113, www.premiermedcorp.com



Scan QR and Connect with us.